

Diagram A Wiring of devices

NOTES:

- Leave end-of-line device on all unused circuit. Disconnect 50µF, 50V end-of-line capacitor (Cerberus Pytronics P/N 100-115580) from TBA prior to installation. Where end-of-line device is intended to be installed inside of a detector box, same device can be used. Where end-of-line device is intended to be installed inside of a metal box, UL Listed Cerberus Pytronics model EL-30 end-of-line device (with 50µF, 50V capacitor) must be used. Observe polarity.
- Leave end-of-line device on all unused circuit. Disconnect 5K6, ½W end-of-line resistor (Cerberus Pytronics P/N 140-112166) from TBA prior to installation. Where end-of-line device is intended to be installed inside of a detector box, same device can be used. Where end-of-line device is intended to be installed inside of a metal box, UL Listed Cerberus Pytronics model EL-31 end-of-line device (with 5K6, ½W resistor) must be used.
- Style B & D (**Supervised**) **Initiating Circuits** use up to 30 smoke detectors with any combination of *Compatible Detectors* or unlimited amount of UL Listed dry contact devices. The use of water flow switch device is not allowed on these circuits. See diagram B for wiring in Style D (Class A). See note 12.
Maximum loop resistance: 39Ω total
Rated 16.5 - 23.5VDC, 9mA max supv, 285mA max alarm
Max. ripple: 450mV
- Style B (**Supervised**) **Manual Pull Station Circuit** use unlimited amount of UL Listed dry contact devices. Use of water flow switch device is not allowed on this circuit.
Maximum loop resistance: 100Ω total
Rated 21.5VDC nominal, 5mA max supv, 45mA max alarm
- Style B (**Supervised**) **Shut-down Circuit** use UL Listed N.C. dry contact device. See Operation Manual for use of shut-down circuit. Wiring connections must be located within 20 feet from cabinet, and enclosed within conduit.
Maximum loop resistance: 39Ω total
Rated 18.1 - 23.5VDC supv
- Style Y & Z (**Supervised**) **Indicating Alarm Circuits** use only any combination of *Compatible Indicating Devices*. See diagram B for wiring in Style Z (Class A).
Rated 24VDC nominal, 1.5A max
Maximum loop resistance: 3Ω total
- Non-Silenceable Indicating Alarm Circuit** cannot be wired in Style Z (Class A).
- End-of-line device is to be disconnect from TBA prior to be connect according to diagram B for wiring in Style D (Class A).
- End-of-line device is to be disconnect from TBA prior to be connect according to diagram B for wiring in Style Z (Class A).
- These circuits are polarity reversal. Polarity is reversed in normal condition of supervisory.
- Maximum battery charging current average at 24V is 0.8A.
- RESET / LAMP TEST switch must be manually held on for at least 5 seconds in order to reset the system.

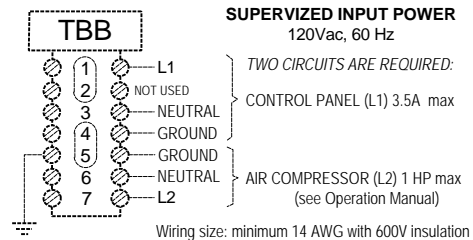


Diagram C AC line wiring

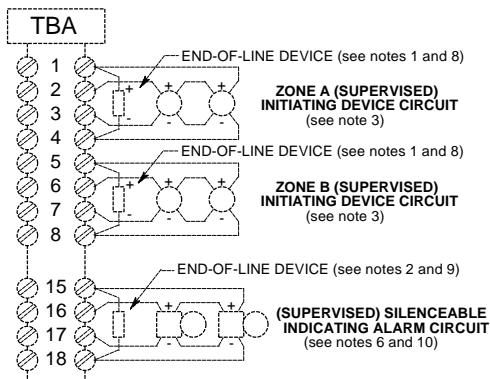
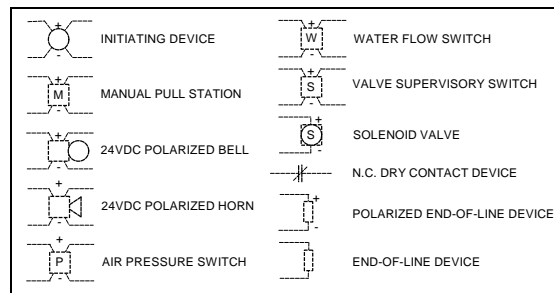


Diagram B Wiring in Style D & Z (Class A)



Legend

Refer to **INSTALLATION, OPERATION and MAINTENANCE MANUAL** (P/N 05-C003-0-03 Issued January 96) for List of Compatible Devices and additional information.