

TOTALPAC2 Integrated Fire Protection System

Skid Mounted Pre-assembled Units

Dimensions and shipping weights

The **TOTALPAC2** unit skid is made of sturdy 14 gauge steel, measuring 36" x 20" x 6" (91,4 x 50,8 x 15,2 cm) for 1½", 2" & 3" systems and 46" x 24" x 6" (116,8 x 61 x 15,2 cm) for 4" & 6" systems (refer to Figures 1 to 5 for dimensions).

All surfaces are rust proof coated, inside and outside, with fire red, oven baked polyester powder on phosphate base.

IMPORTANT! The **TOTALPAC2** skid units are NOT designed to be installed where they will be subjected to outdoors and/or freezing conditions. Refer to environmental data for additional details. Subjecting the unit to conditions outside these limitations might hamper the normal operation of the system.

The skid assembly is pre-assembled and factory tested under ISO-9001 conditions (refer to following figures for installation and clearances details).

Note: This skid unit contains only the mechanical section of the **TOTALPAC2** trim. Electrical connections, control panel and air supply when applicable are provided by others.

Multiple unit installations are easily achieved by manifolding units together at their water inlets but drains shall remain separate and open. Refer to Figure 7 & 8 for additional details on how to pipe the drains.

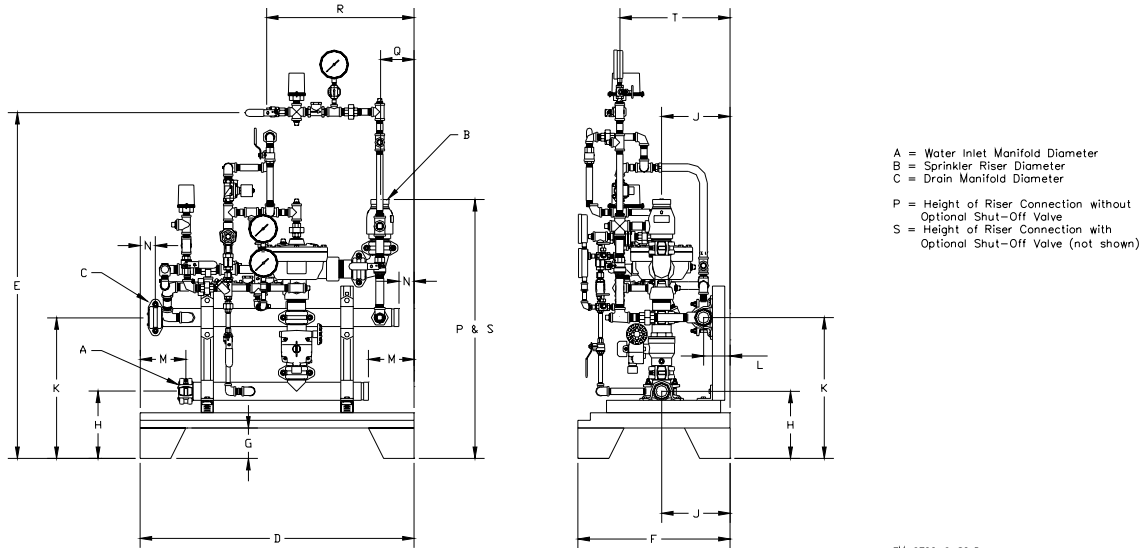
System Size (Dia.)	Shipping weights	
	Lbs.	Kg.
PREACTION & HP® DRY		
1½"	285	192
2"	310	141
3"	440	200
4"	510	231
6"	710	322
DELUGE		
1½"	240	109
2"	265	120
3"	395	179
4"	465	211
6"	665	302
DRY PIPE		
4"	245	111
6"	286	130
WET PIPE		
3"	258	117
4"	265	120
6"	296	134

Note: Above Shipping Weights are nominal and will change depending on configuration and options selected.

TOTALPAC2 Integrated Fire Protection System

Skid Mounted Pre-assembled Units

Figure 1 – Dimensions - Preaction:

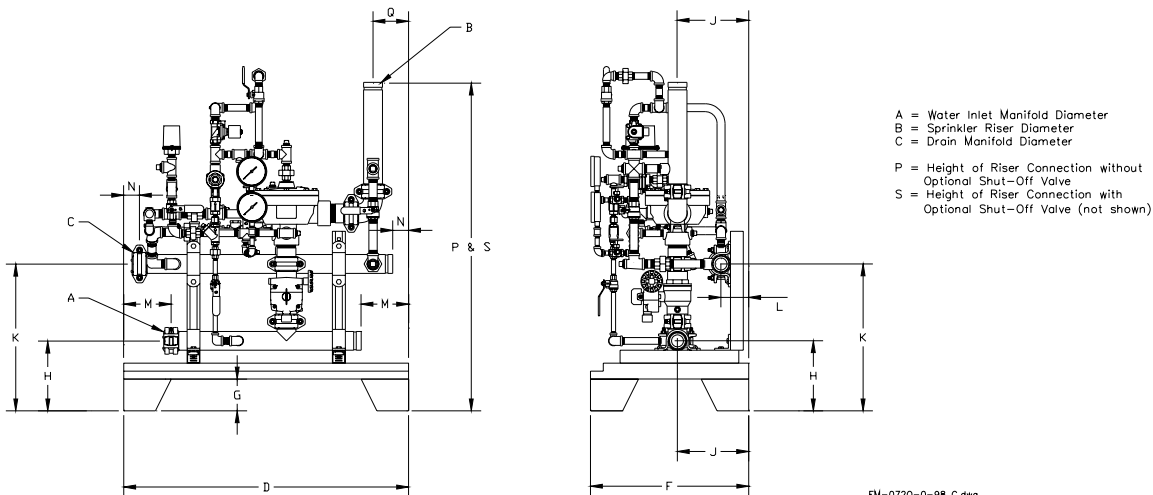


FM-0720-0-82 D.dwg

System Size	A	B	C	D	E	F	G	H	J	K	L	M	N	P	Q	R	S	T
1½"	2"	1½"	2"	36"	46"	20"	4"	8⅞"	9"	18½"	3½"	6"	2"	34½"	5"	19½"	41¼"	13¾"
2"	2"	2"	2"	36"	46"	20"	4"	8⅞"	9"	18½"	3½"	6"	2"	34"	5"	19½"	41¼"	14½"
3"	4"	3"	2"	36"	46"	20"	4"	9⅞"	9"	18½"	3½"	6"	2"	38⅞"	5"	19½"	42⅞"	14½"
4"	4"	4"	2"	46"	46"	24"	4"	9⅞"	10"	18½"	3½"	6"	2"	39⅞"	6½"	19½"	44¼"	16⅞"
6"	6"	6"	2"	46"	46"	24"	4"	11"	10"	18½"	3½"	6"	2"	48⅞"	6½"	19½"	54½"	21"

Note: Some dimensions and actual skid layout may vary depending on options and configuration selected.

Figure 2 – Dimensions - Deluge:



FM-0720-0-98 C.dwg

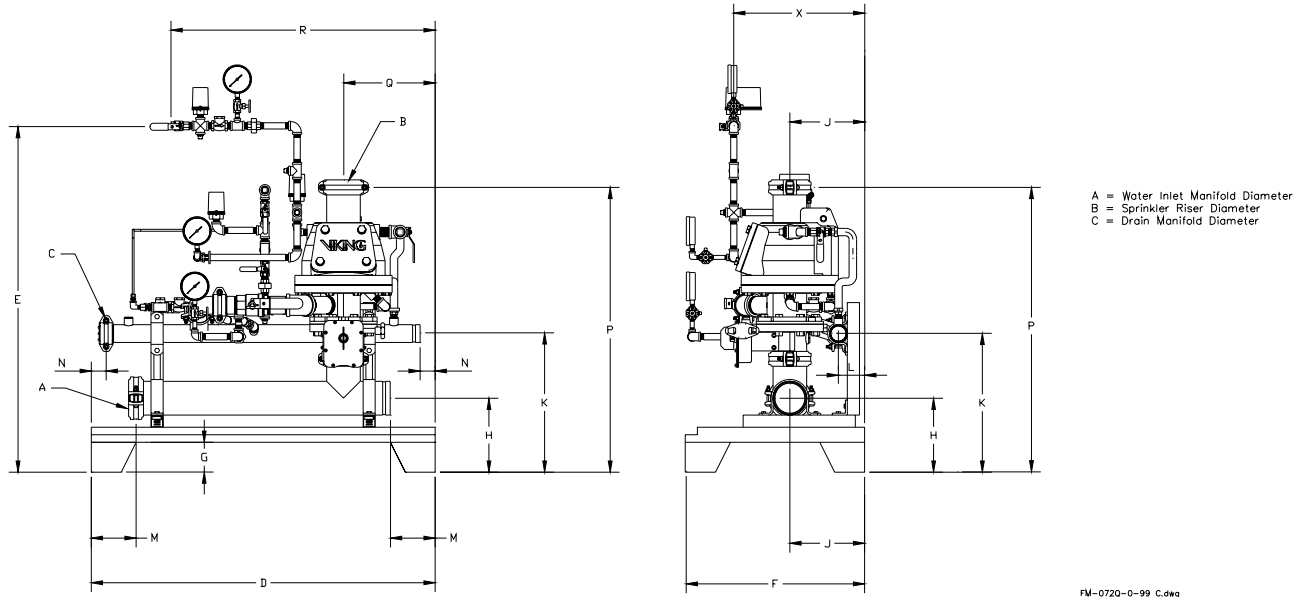
System Size	A	B	C	D	E	F	G	H	J	K	L	M	N	P	Q	S
1½"	2"	1½"	2"	36"	---	20"	4"	8⅞"	9"	18½"	3½"	6"	2"	40"	5"	47¼"
2"	2"	2"	2"	36"	---	20"	4"	8⅞"	9"	18½"	3½"	6"	2"	41⅞"	5"	48⅞"
3"	4"	3"	2"	36"	---	20"	4"	9⅞"	9"	18½"	3½"	6"	2"	38⅞"	5"	42⅞"
4"	4"	4"	2"	46"	---	24"	4"	9⅞"	10"	18½"	3½"	6"	2"	40½"	6½"	45⅞"
6"	6"	6"	2"	46"	---	24"	4"	11"	10"	18½"	3½"	6"	2"	48⅞"	6½"	54½"

Note: Some dimensions and actual skid layout may vary depending on options and configuration selected.

TOTALPac2 Integrated Fire Protection System

Skid Mounted Pre-assembled Units

Figure 3 – Dimensions - Dry:

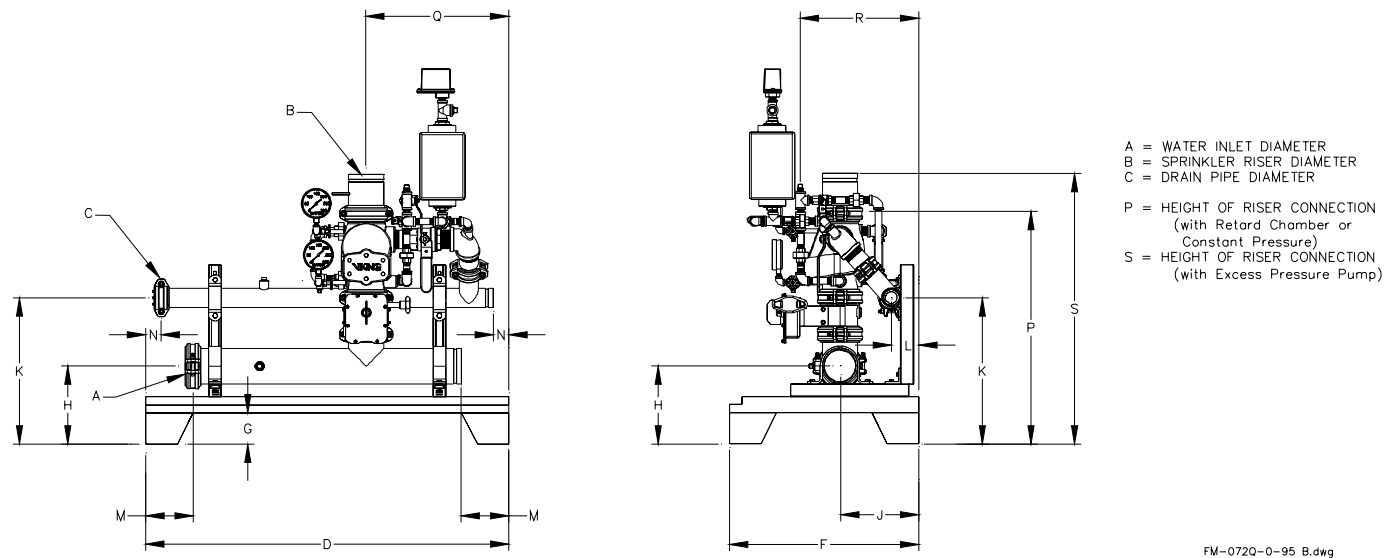


FM-0720-0-99 C.dwg

System Size	A	B	C	D	E	F	G	H	J	K	L	M	N	P	Q	R	X
4"	4"	4"	2"	46"	46 $\frac{1}{4}$ "	24"	4"	9 $\frac{7}{8}$ "	10"	18 $\frac{1}{2}$ "	3 $\frac{1}{2}$ "	6"	2"	38"	12 $\frac{1}{4}$ "	33"	17 $\frac{1}{2}$ "
6"	6"	6"	2"	46"	49 $\frac{7}{8}$ "	24"	4"	11"	10"	18 $\frac{1}{2}$ "	3 $\frac{1}{2}$ "	6"	2"	41 $\frac{1}{4}$ "	13 $\frac{1}{4}$ "	24"	17 $\frac{1}{2}$ "

Note: Some dimensions and actual skid layout may vary depending on options and configuration selected.

Figure 4 – Dimensions – Wet:



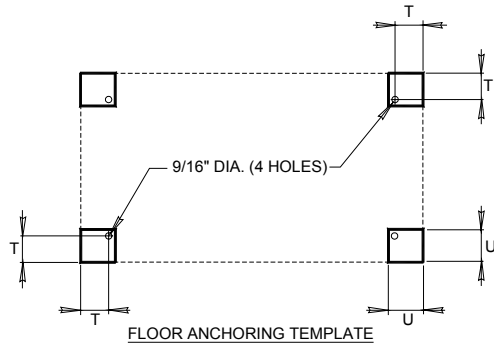
FM-0720-0-95 B.dwg

System Size	A	B	C	D	F	G	H	J	K	L	M	N	P	Q	S
3"	4"	3"	2"	36"	20"	4"	9 $\frac{7}{8}$ "	9"	18 $\frac{1}{2}$ "	3 $\frac{1}{2}$ "	6"	2"	29 $\frac{3}{4}$ "	15 $\frac{1}{2}$ "	34 $\frac{3}{8}$ "
4"	4"	4"	2"	46"	24"	4"	9 $\frac{7}{8}$ "	10"	18 $\frac{1}{2}$ "	3 $\frac{1}{2}$ "	6"	2"	29 $\frac{3}{8}$ "	25 $\frac{1}{4}$ "	33 $\frac{3}{4}$ "
6"	6"	6"	2"	46"	24"	4"	11"	10"	18 $\frac{1}{2}$ "	3 $\frac{1}{2}$ "	6"	2"	35"	13 $\frac{3}{8}$ "	39 $\frac{3}{8}$ "

Note: Some dimensions and actual skid layout may vary depending on options and configuration selected.

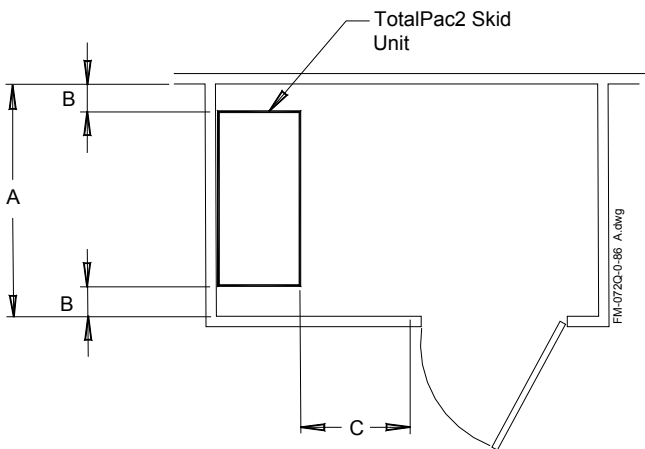
TOTALPAC2 Integrated Fire Protection System
Skid Mounted Pre-assembled Units

Figure 5 – Dimensions – Anchoring detail:



System Size	T	U
1 1/2"	2 3/4"	4"
2"	2 3/4"	4"
3"	2 3/4"	4"
4"	2 3/4"	4"
6"	2 3/4"	4"

Figure 6 – Skid clearance detail

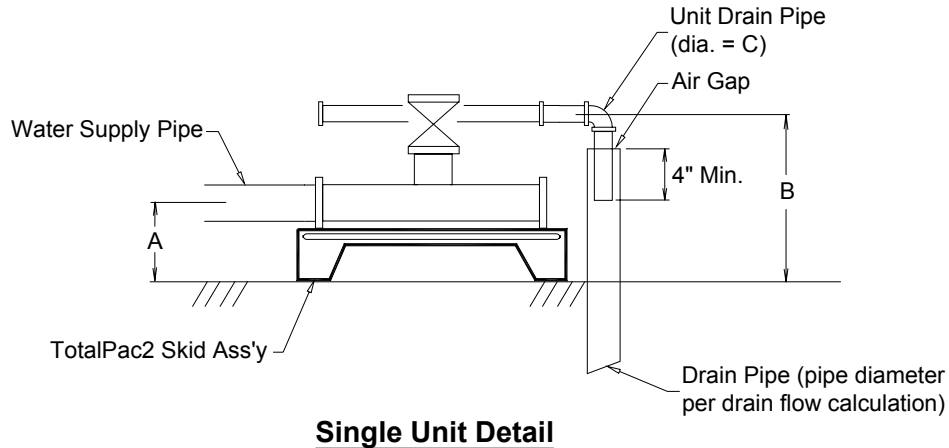


	Unit Size	Minimum Dimension	
A	1 1/2"	60"	152,4 cm
	2"	60"	152,4 cm
	3"	60"	152,4 cm
	4"	70"	177,8 cm
	6"	70"	177,8 cm
B	All	12"	30,5 cm
C	All	24"	61 cm

TOTALPac2 Integrated Fire Protection System

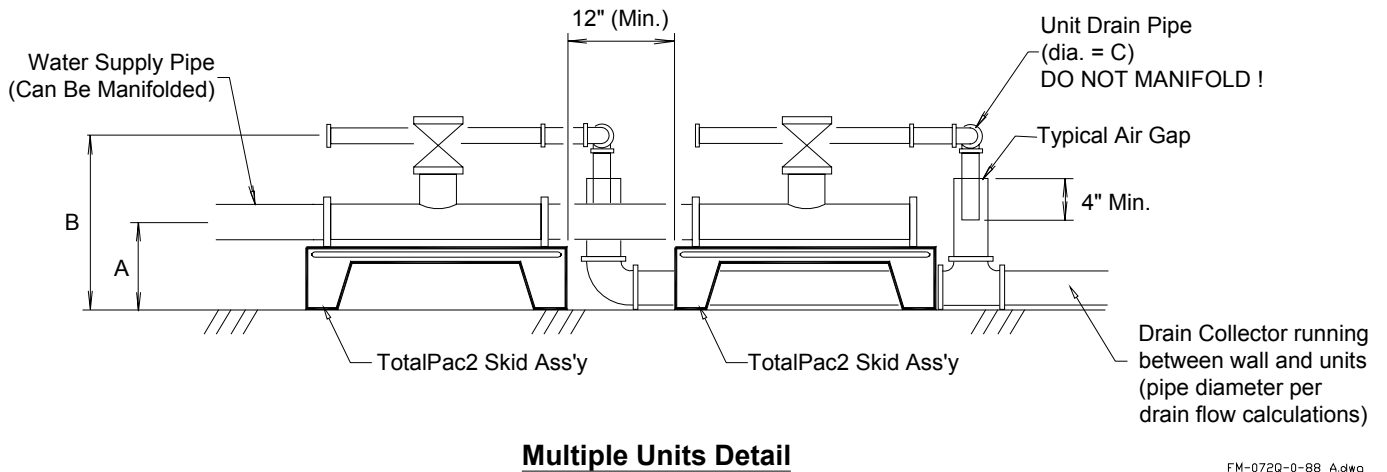
Skid Mounted Pre-assembled Units

Figure 7: Open drain details for single unit:
(see dimensions in table below)



FM-072C-0-87 A.dwg

Figure 8: Open drain details for multiple units:
(see dimensions in table below)



FM-072Q-0-88 A.dwg

Unit Size:	1½"	2"	3"	4"	6"
A	8⅞"	8⅞"	9⅞"	9⅞"	11"
B	18½"	18½"	18½"	18½"	18½"
C	2"	2"	2"	2"	2"

Notes:

1. Supply and drain pipes can be connected on either sides of cabinet.
2. All pipes and fittings should meet applicable codes.
3. Actual drain collector diameter shall be determined with detailed hydraulic calculations and is the responsibility of the system designer.

TOTALPAC2 Integrated Fire Protection System

Skid Mounted Pre-assembled Units